

Wander

our extensive walking tracks
and surrounds

Enjoy

the native gardens with
abundant wildlife.



Photo of Victorian Southern Brown Bandicoot
seen on the property

Explore

the hills, heathlands and wildflowers

Photograph

ancient granite rocks
or find one to climb for better views.

Observe

local flora regeneration and
prolific birdlife

Witness

soil-creation processes
especially active since the
bushfire of 2006

Help

protect the rare
Southern Brown Bandicoots
as well as the gardens and plantations.

Please leave gates as you find them.

Grampians Grevillea Cottage



JUST 30 mins from Halls Gap via Stawell.
10 mins from Seppelts Winery

EASY DIRECTIONS

About 2 km south of Stawell, and
7 km north of Gt Western,
turn off the Western Highway
at the Stawell Park Caravan Park.
We are 7 km down Panrock
Reservoir Rd and number
693 is on the left.

Tariff

\$130 per night inc. GST

Grampians Grevillea Cottage
White Gums Australia
ABN 44 361 289 021

E: hello@whitegumsaustralia.com

A: PO Box 107 Stawell VIC 3380
693 Panrock Reservoir Rd Stawell

T: +61(0)3 5356 2404 (landline)
+61(0)400 297 071 (mobile)

GRAMPIANS GREVILLEA COTTAGE



BED & BREAKFAST

at PANROCK RIDGE

693 Panrock Reservoir Rd

Black Range near Stawell Victoria

Tel: +61 3 5356 2404



Welcome to our Grevillea Garden in the foothills of the Grampians.



Nestled amongst beautiful native gardens and exposed granite boulders with views to Mt William.

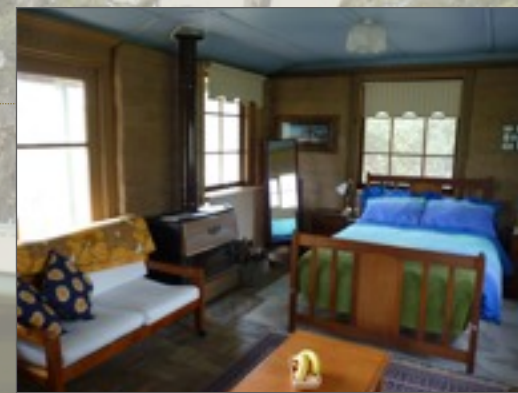
Shady verandah and gas BBQ for lazy summer lunches.

Wood stove inside for cosy winter comfort.

Our land management assists the natural regeneration of some special vegetation communities and as Land for Wildlife members, we nurture the habitat for our native fauna.

With over 78 hectares protected under a conservation covenant with Trust For Nature we have many resident kangaroos, wallabies, echidnas, possums, gliders, goannas and an extensive birdlist!

The flowering times for the gardens are May through to Christmas peaking in September/October, but all year is a great time for Grevilleas !



Grampians Grevillea Cottage is solid mud-brick and weatherboard, built using natural or recycled materials.

Complete privacy but just 50m from the main house.

Facilities include double bed, wood stove, TV and couch.

Shower and toilet are en-suite.
All linen provided.

Kitchenette with kettle, toaster, micro-wave, fridge.

Generous continental breakfast basket

Barbeques and outdoor tables.
Ample firewood.

You can sit under the verandah with views of the Grampians, or walk freely around the 78 hectare granite boulder strewn ridge.

Opposite is the Panrock Reservoir and Eastern Black Range State Park.

